

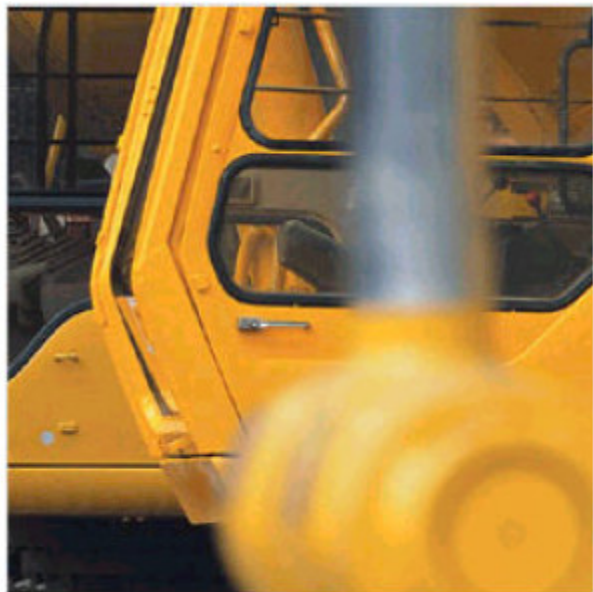


Solaplex™ Pigments

Industrial Coatings Application

Today's market pressures such as economy and ecology apply to the general industrial and architectural paint industries as much as any other.

- Solaplex™ Pigments have been designed to offer new options in their own right or as a component of colour formulations.
- Solaplex™ Pigments impart colour, combined with excellent opacity, to bright solid colours to achieve cost-efficiency, without adversely affecting the paint rheology.
- Solaplex™ Pigments are universally compatible and therefore are ideally suited for in-plant and instore tinting systems.



Solaplex™ Pigments can be supplied as a powder, colour-matched powder blend or liquid dispersion.